

TBX15 Antibody (N-term)
Affinity Purified Rabbit Polyclonal Antibody (Pab)
Catalog # AP18511a**Specification**

TBX15 Antibody (N-term) - Product Information

Application	WB, IF, E
Primary Accession	O96SF7
Other Accession	O70306 , NP_689593.2
Reactivity	Human, Mouse
Host	Rabbit
Clonality	Polyclonal
Isotype	Rabbit IgG
Calculated MW	65757
Antigen Region	47-73

TBX15 Antibody (N-term) - Additional Information**Gene ID** 6913**Other Names**

T-box transcription factor TBX15, T-box protein 15, T-box transcription factor TBX14, T-box protein 14, TBX15, TBX14

Target/Specificity

This TBX15 antibody is generated from rabbits immunized with a KLH conjugated synthetic peptide between 47-73 amino acids from the N-terminal region of human TBX15.

Dilution

WB~~1:1000

IF~~1:10~50

E~~Use at an assay dependent concentration.

Format

Purified polyclonal antibody supplied in PBS with 0.09% (W/V) sodium azide. This antibody is purified through a protein A column, followed by peptide affinity purification.

Storage

Maintain refrigerated at 2-8°C for up to 2 weeks. For long term storage store at -20°C in small aliquots to prevent freeze-thaw cycles.

Precautions

TBX15 Antibody (N-term) is for research use only and not for use in diagnostic or therapeutic procedures.

TBX15 Antibody (N-term) - Protein Information**Name** TBX15

Synonyms TBX14

Function Probable transcriptional regulator involved in the development of the skeleton of the limb, vertebral column and head. Acts by controlling the number of mesenchymal precursor cells and chondrocytes (By similarity).

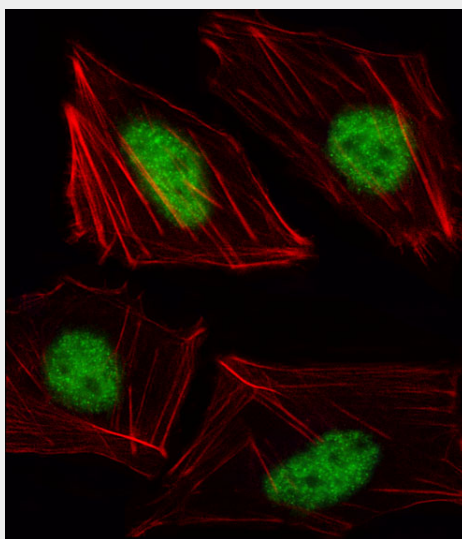
Cellular Location

Nucleus {ECO:0000255|PROSITE-ProRule:PRU00201}.

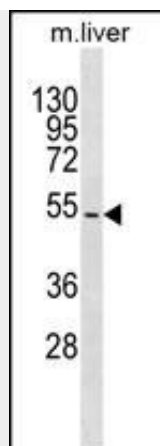
TBX15 Antibody (N-term) - Protocols

Provided below are standard protocols that you may find useful for product applications.

- [Western Blot](#)
- [Blocking Peptides](#)
- [Dot Blot](#)
- [Immunohistochemistry](#)
- [Immunofluorescence](#)
- [Immunoprecipitation](#)
- [Flow Cytometry](#)
- [Cell Culture](#)

TBX15 Antibody (N-term) - Images

Fluorescent image of HUVEC cell stained with TBX15 Antibody (N-term)(Cat#AP18511a).HUVEC cells were fixed with 4% PFA (20 min), permeabilized with Triton X-100 (0.1%, 10 min), then incubated with TBX15 primary antibody (1:25, 1 h at 37°C). For secondary antibody, Alexa Fluor® 488 conjugated donkey anti-rabbit antibody (green) was used (1:400, 50 min at 37°C).Cytoplasmic actin was counterstained with Alexa Fluor® 555 (red) conjugated Phalloidin (7units/ml, 1 h at 37°C).TBX15 immunoreactivity is localized to Nucleus significantly.



TBX15 Antibody (N-term) (Cat. #AP18511a) western blot analysis in mouse liver tissue lysates (35ug/lane). This demonstrates the TBX15 antibody detected the TBX15 protein (arrow).

TBX15 Antibody (N-term) - Background

Probable transcriptional regulator involved in developmental processes.